

EZ-TRENCH™

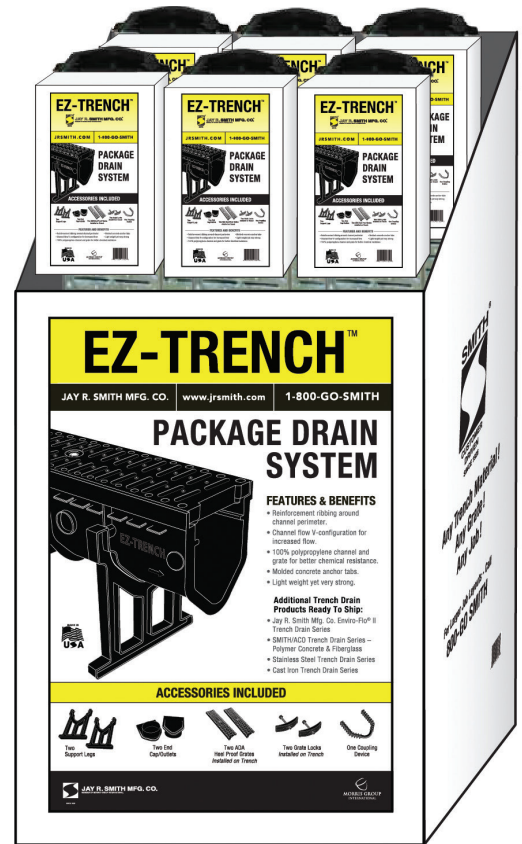
Package Drain System



FEATURES & BENEFITS



- Reinforcement ribbing around channel perimeter.
- V-Channel for better flow.
- 100% Polypropylene channel & grate for better chemical resistance.
- ADA/heel proof grate.
- Install with confidence!



ACCESSORIES INCLUDED



Two End Cap/Outlets



Two Grate Locks Installed on Trench



Two ADA Heel Proof Grates Installed on Trench



One Coupling Device



Two Support Legs

ADDITIONAL ACCESSORY SOLD SEPARATELY



Vertical No-Hub Outlet

EZ-TRENCH

FIG. No.	Description	UPC No.	Case Qty.
901*	(1) EZ-TRENCH w/ACCESSORIES	727753-417830	6
901-04	(1) EZ-TRENCH NO-HUB OUTLET	727753-425232	6

* 38.5" length



Jay R. Smith Mfg. Co. • 2781 Gunter Park Dr. East • Montgomery, AL 36109-1405

800-GO-SMITH

www.jrsmith.com





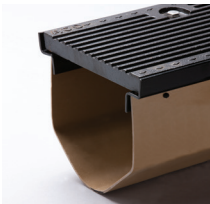
Your COMPLETE TRENCH source!



2700 Series

Cast Iron Trench Drain System

- Heavy duty modular drain for loading or parking areas.
- Available with flange and clamping collar.



9812 Series

Fiberglass Trench Drain System

- High strength, light weight, and corrosion-resistant.
- 12 sloped channels, 8 neutral channels are each nine feet in length and channel depth varies from 6.88 to 20.38 inches.



9895 Series

Polymer Concrete Trench Drain System

- Varying widths and depths to meet application needs.
- Anchor ribs offer security against upward movement or shifting after installation.



Enviro-Flo® II
9930 Series

Polypropylene Trench Drain System

- Lightweight, Easy to Handle and Install.
- Channels snap together—no annoying nuts, bolts and clips.
- 40 different channels—20 pre-sloped and 20 neutral for long runs.



9660 Series

Stainless Steel Modular Trench Drain System

- Used where hygiene, corrosion resistance, and aesthetics are important.
- All drains constructed from 16 gage, type 304 Stainless Steel, type 316 Stainless Steel is optional.
- Several grate styles available to accommodate different applications.



9666 Series

Linear Shower Drain System

- Barrier free threshold drain for shower stall.
- Vandal-proof ADA compliant perforated or slotted grates.
- 2" wide drain.



EZ-Trench
901-EZ Series

Package Drain System

- Reinforcement ribbing around channel perimeter.
- V-Channel for better flow.
- 100% Polypropylene channel and ADA/heel proof grate.
- Installation accessories included.

Jay R. Smith Mfg. Co.
2781 Gunter Park Dr. East
Montgomery, AL 36109-1405
www.jrsmith.com

SPM3007-1507



MORRIS GROUP
INTERNATIONAL
www.morrisgroup.co